

CO-ORGANIZED BY



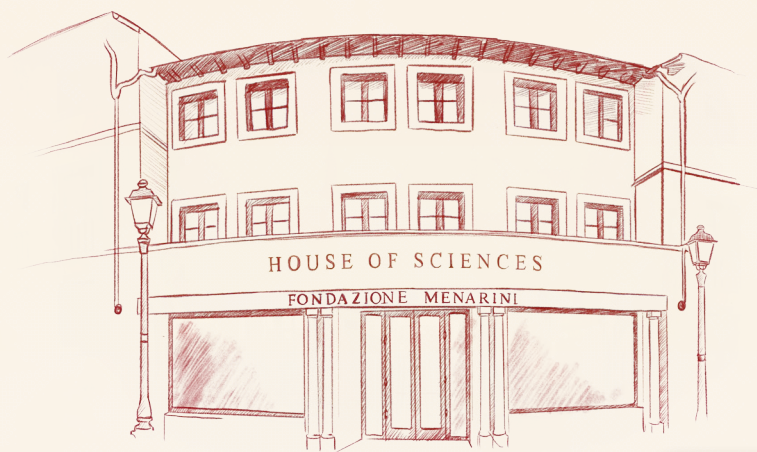
FONDAZIONE  
MENARINI



50  
YEARS OF  
FONDAZIONE  
MENARINI

# MASTERCLASS FONDAZIONE MENARINI

## NEW TRENDS IN ISCHEMIC HEART DISEASE: EMERGING DATA AND CLINICAL PRACTICE



[WWW.FONDAZIONE-MENARINI.COM](http://WWW.FONDAZIONE-MENARINI.COM)

27 - 28 February, 2026 | Auditorium Fondazione Menarini, Fiesole

## RATIONALE

Ischemic heart disease is heart damage caused by narrowed heart arteries. This is also called coronary artery disease and coronary heart disease. When arteries narrow, less blood and oxygen reach the heart muscle and can lead to heart attack.

To describe the clinical presentations of coronary artery disease (CAD) during stable periods, particularly those preceding or following an acute coronary syndrome (ACS), the 2019 ESC (European Society of Cardiology) Guidelines for the diagnosis and management of chronic coronary syndromes introduced the term chronic coronary syndromes (CCS), defined as a range of clinical presentations or syndromes that arise due to structural and/or functional alterations related to chronic diseases of the coronary arteries and/or microcirculation.

Chronic coronary diseases are frequently progressive and may destabilise at any moment with the development of an acute coronary syndrome (ACS). Therefore, it's important to quickly diagnose and treat CCS.

President of the Meeting  
**Prof. Pasquale Perrone Filardi**

## **PRESIDENT OF THE MEETING**

**Pasquale Perrone Filardi**

(Naples, IT)

## **CO-ORGANIZED BY:**



FONDAZIONE  
MENARINI

Centro Direzionale Milanfiori

20089 Rozzano (Milan, Italy)

Strada 8 – Edificio N

Phone: +39 02 55308110

Fax: +39 02 55305739

[milan@fondazione-menarini.it](mailto:milan@fondazione-menarini.it)

[www.fondazione-menarini.com](http://www.fondazione-menarini.com)

## **ORGANIZING AND SCIENTIFIC SECRETARIAT**

**Summeet S.r.l.**

via Paolo Maspero, 5 - 21100 Varese

Tel. +39 0332 231416 - Fax +39 0332 317748

Email: [info@summeet.it](mailto:info@summeet.it)

Website: [www.summeet.it](http://www.summeet.it)

## **LOGISTIC SECRETARIAT**

**Hinovia Events srl**

Via Guelfa, 144

50129 Florence (Italy)

# NEW TRENDS IN ISCHEMIC HEART DISEASE: EMERGING DATA AND CLINICAL PRACTICE

PROGRAMME

FRIDAY, 27<sup>TH</sup> FEBRUARY

## FRIDAY, 27<sup>TH</sup> FEBRUARY 2026 - AFTERNOON

12.30 p.m. - 01.15 p.m. Opening of Secretariat and participants registration

01.15 p.m. - 01.30 p.m. Institutional Greetings  
**Pasquale Perrone Filardi** (Naples, IT)  
**Giuseppe Caracciolo** (Fondazione Menarini, Florence)

### **SESSION I - HEART DISEASE GRAND ROUND**

Chairperson: **P. Perrone Filardi** (Naples, IT)

01.30 p.m. - 02.15 p.m. Opening Lecture: New Trends in Ischemic Heart Disease, pathophysiological concepts and epidemiology  
**R. Mehran**

02.15 p.m. - 02.45 p.m. Clinical aspects of CCS: the patient profile  
**G. Patti**

02.45 p.m. - 04.00 p.m. Live clinical case / live in the box: hemodynamic lab experience: diagnosis and evaluation in CCS  
**G. Esposito**

04.00 p.m. - 04.45 p.m. Discussion: general clinical examination in Ischemic Heart Disease and CCS

04.45 p.m. - 05.00 p.m. *Coffee break*



# NEW TRENDS IN ISCHEMIC HEART DISEASE: EMERGING DATA AND CLINICAL PRACTICE

PROGRAMME

FRIDAY, 27<sup>TH</sup> FEBRUARY

## SESSION II - WHAT IS NEW IN CCS

Chairperson: **P. Perrone Filardi** (Naples, IT)

- |                         |  |
|-------------------------|--|
| 05.00 p.m. - 06.00 p.m. | Panel Discussion: What is new in Heart Diseases and contemporary challenges  |
| 06.00 p.m. - 06.45 p.m. | Lecture: AI in Cardiology<br> <b>T. Luscher</b> |
| 06.45 p.m. - 07.30 p.m. | Discussion   |
| 07.30 p.m. - 07.45 p.m. | Take-home messages<br>Closure of the first day of the conference   |
| 07.30 p.m. - 08.00 p.m. | Survey event: Satisfaction survey with certificate   |

### SATURDAY, 28<sup>TH</sup> FEBRUARY - MORNING

08.30 a.m. - 08.45 a.m. Opening of the Secretariat

08.45 a.m. - 09.00 a.m. Introduction

#### **SESSION III - OPTIMAL ASSESSMENT AND TREATMENTS IN PATIENT WITH CAD AND CCS**

Chairperson: **C. Indolfi**

09.00 a.m. - 09.45 a.m. Opening Lecture: a panoramic view of optimal  
assessment and treatments in CCS  
**R. Montisci**

09.45 a.m. - 10.15 a.m. Coronary artery disease and HF: managing and  
treatments  
**S. Paolillo**

10.15 a.m. - 10.45 a.m. Live clinical case / live in the box: managing patient with  
CAD, from therapy to revascularization and long-term  
follow-up and care  
**C. Spaccarotella**

10.45 a.m. - 11.00 a.m. *Coffee Break*

11.00 a.m. - 11.45 a.m. Ischemia with non-obstructive coronary arteries  
**C. Indolfi**

11.45 a.m. - 12.45 pm. Discussion: management of CAD and CCS

### SATURDAY, 28<sup>TH</sup> FEBRUARY - AFTERNOON

#### **SESSION IV -INTERACTIVE CLINICAL CONTEST**

- 12.45 p.m. - 01.15 p.m. Clinical contest: presentation in escape room format of patient profiles with ischemic heart disease and chronic coronary syndromes  
**P. Gargiulo, R. Montisci**
- 01.15 p.m. - 02.15 p.m. *Lunch*
- 02.15 p.m. - 04.00 p.m. Clinical contest: presentation in escape room format of patient profiles with ischemic heart disease and chronic coronary syndromes  
**P. Gargiulo, R. Montisci**
- 04.00 p.m. - 04.15 p.m. Plenary wrap-up and awarding of the winning work group
- 04.15 p.m. - 04.30 p.m. Take-home message and Closure
- 04.30 p.m. - 04.45 p.m. Survey event: Satisfaction survey with certificate

# NEW TRENDS IN ISCHEMIC HEART DISEASE: EMERGING DATA AND CLINICAL PRACTICE

## FACULTY

---

**Giovanni Esposito**

---

**Pasquale Perrone Filardi**

Naples, IT

---

**Ciro Indolfi**

---

**Tom Luscher** 

---

**Roxana Mehran**

---

**Roberta Montisci**

---

**Stefania Paolillo**

---

**Giuseppe Patti**

---

**Carmen Spaccarotella**

---

**Paola Gargiulo**

---

# NEW TRENDS IN ISCHEMIC HEART DISEASE: EMERGING DATA AND CLINICAL PRACTICE

## PARTICIPANTS

---

**Giuseppe Abbellito**

---

**Francesco Animati**

---

**Andrea Annibalo**

---

**Simone Atzori**

---

**Andrea Cafasso**

---

**Anna Careddu**

---

**Francesco Cavaliere**

---

**Aldo Celeste**

---

**Sonia di Franco**

---

**Gaetano Iannucci**

---

**Lorenzo Imparato**

---

**Ludovica Marfella**

---

**Beatrice Marongiu**

---

**Rosa Alba Massa**

---

# NEW TRENDS IN ISCHEMIC HEART DISEASE: EMERGING DATA AND CLINICAL PRACTICE

## GENERAL INFORMATION

### VENUE

Auditorium Fondazione Internazionale Menarini  
Piazza Giuseppe Garibaldi, 50014 Fiesole FI (Italy)

### SECRETARIAT DURING THE MEETING

The Secretariat will be open at the following times:  
Friday, February 27<sup>th</sup> from 12.30 p.m. to 07.45 p.m.  
Saturday, February 28<sup>th</sup> from 08.30 a.m. to 04.30 p.m.

### OFFICIAL LANGUAGE

The official language of the Meeting will be English. Simultaneous translation will not be provided.

### TECHNICAL FACILITIES

Technical facilities

Facilities will be available for computer presentations and overhead projections.  
A business center with PC (Powerpoint for Windows) will be available for check and preview of presentations. It is essential that speakers take their presentation to the business center at least one hour before the session starts.  
The center will be open at the following times:  
Friday, February 27<sup>th</sup>, from 12:30 p.m. to 08:00 p.m.  
Saturday, February 28<sup>th</sup>, from 08:30 a.m. to 04:45 p.m.

### LUNCH AND COFFEE BREAKS

Lunch and coffee breaks will be served in the Meeting area.

### CERTIFICATE OF ATTENDANCE AND SURVEY

At the end of the meeting, faculty members and participants will have the possibility to answer a short appreciation questionnaire accessible using the QR code projected on the screen. After completing the survey it will immediately be possible to download the Attendance Certificate which can be kept, printed and shared.



FONDAZIONE  
MENARINI



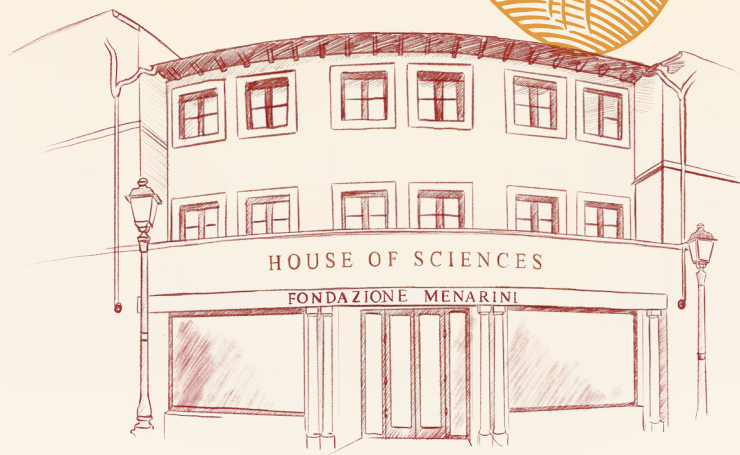
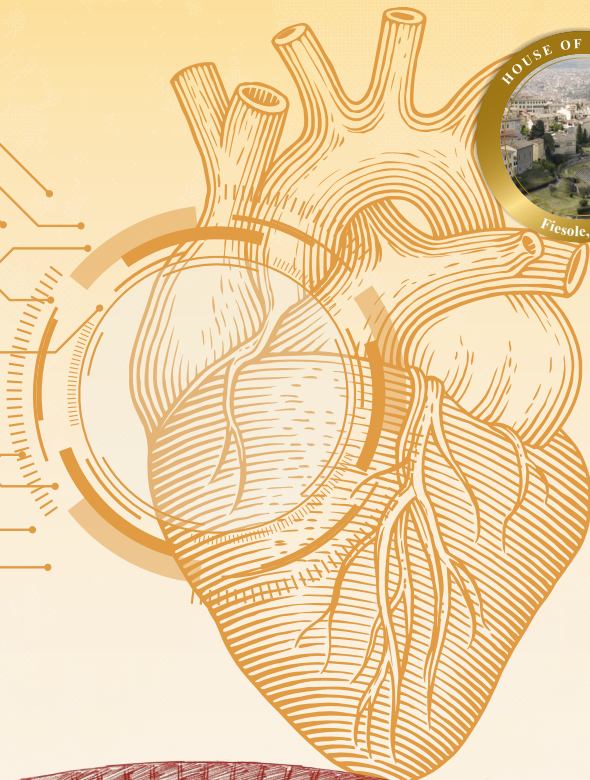
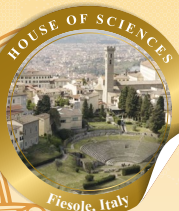
[www.fondazione-menarini.com](http://www.fondazione-menarini.com)

All slides and presentations are available on our website 15 days after the event.

CO-ORGANIZED BY



FONDAZIONE  
MENARINI



Follow us on: [WWW.FONDAZIONE-MENARINI.COM](http://WWW.FONDAZIONE-MENARINI.COM)

Scan the QR code and  
immediately download  
the new APP.



Fondazione  
Menarini  
is also on [LinkedIn](#)